

CERTIFICATE OF LOCATION OF GOVERNMENT CORNER

County of Anoka

State of Minnesota

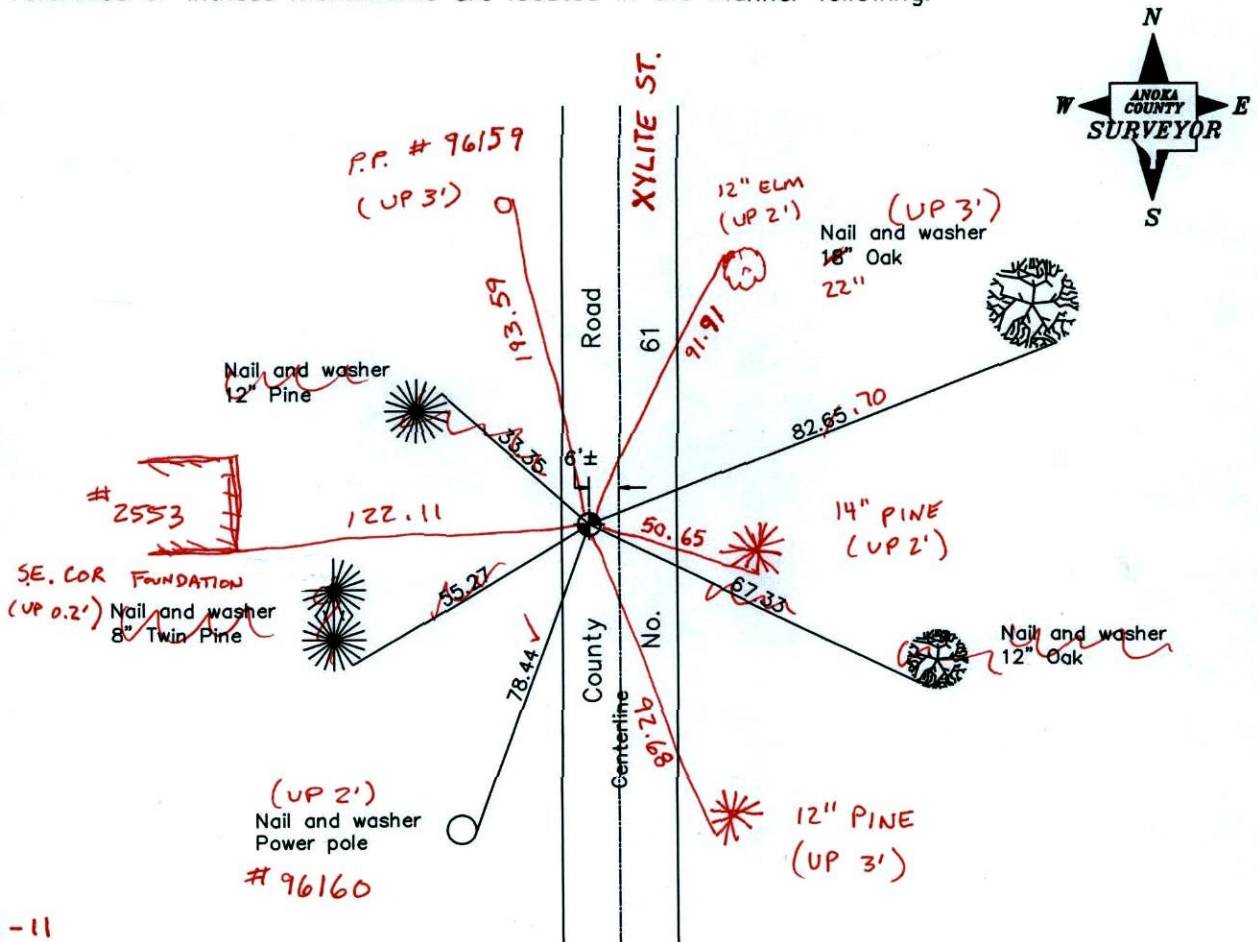
East 1/4 Corner of Sec. 16 Township 32 Range 23

I hereby certify that on the 30th day of August, 1967, I found the described corner which was evidenced by a concrete monument

and I further certify that to perpetuate the location of said corner, I did, at the exact location thereof, place a permanent marker consisting of a cast iron monument ✓

** NEEDS PATCH WORK*

which reference or witness monuments are located in the manner following:



2-28-11
BK-SS
T/T

Revised date

| |
|----------|
| 11/25/91 |
| 7/31/96 |
| 9/30/97 |
| |
| |

N.A.D. 1983 Coordinates
(1996 adjustment)

| County Project Coordinates | State Plane Coordinates |
|-----------------------------|-------------------------|
| Northing <u>182794.0506</u> | Y _____ |
| Easting <u>516109.8902</u> | X _____ |

Date 9/18/01

CERTIFICATE OF LOCATION OF GOVERNMENT CORNER

County of Anoka

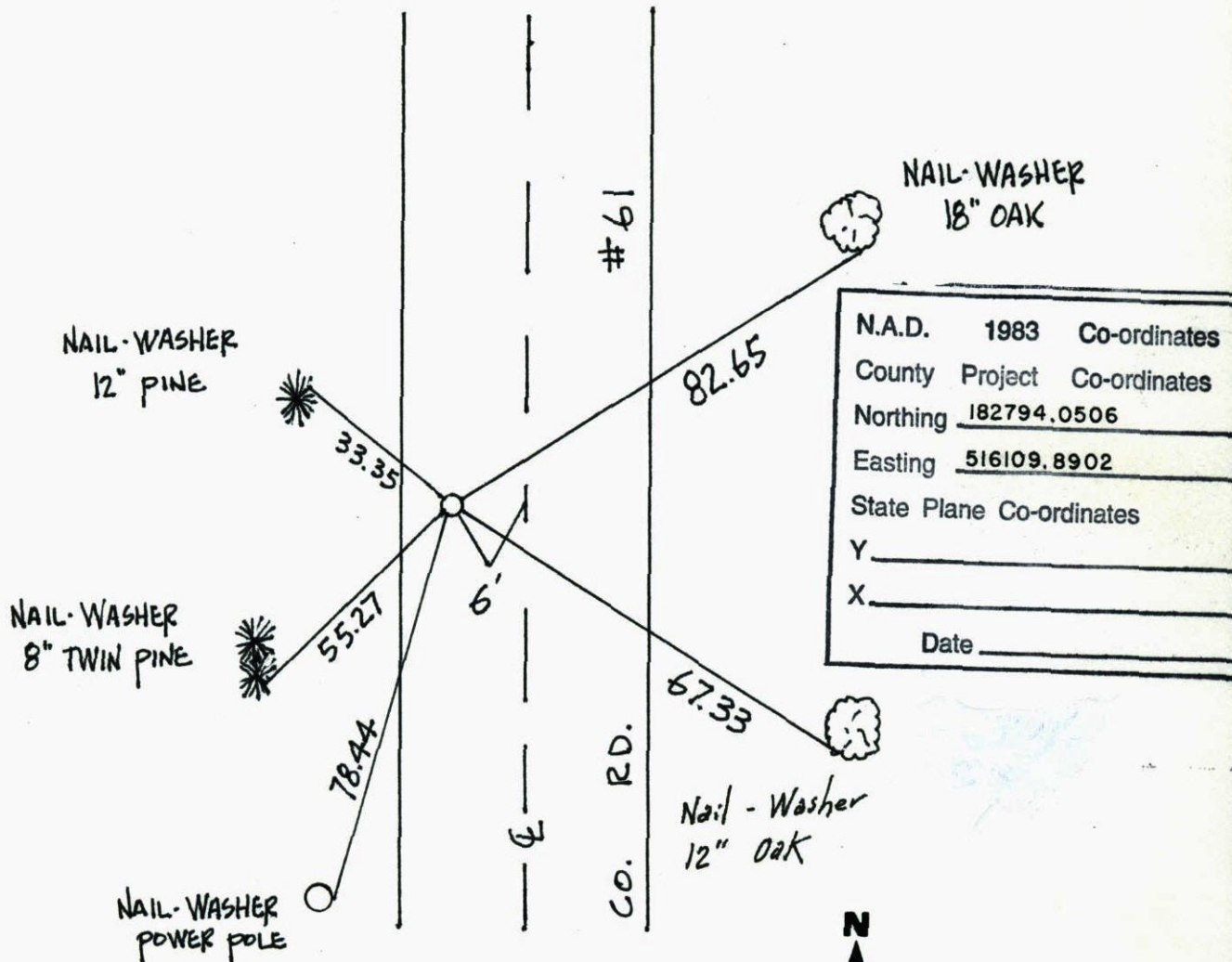
State of Minnesota

EAST 1/4 Corner of Sec. 16 Township 32 Range 23

I hereby certify that on the 30TH day of AUG., 19 67, I found the described corner which was evidenced by CONCRETE MONUMENT

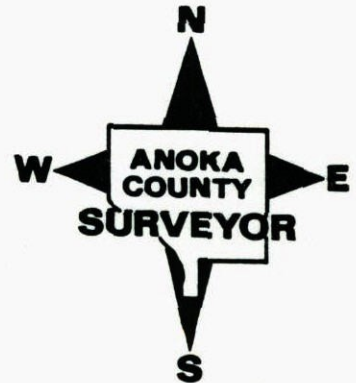
and I further certify that to perpetuate the location of said corner, I did, at the exact location thereof, place a permanent marker consisting of CAST IRON MONUMENT

which reference or witness monuments are located in the manner following:



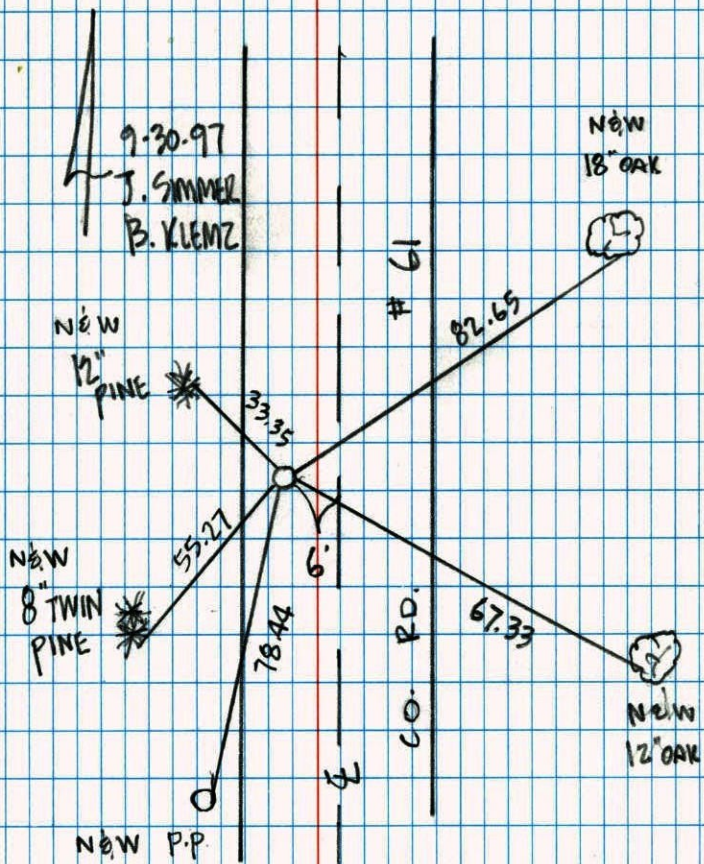
| | | |
|--------------------------|---------|--------------------|
| N.A.D. | 1983 | Co-ordinates |
| County | Project | Co-ordinates |
| Northing | | <u>182794.0506</u> |
| Easting | | <u>516109.8902</u> |
| State Plane Co-ordinates | | |
| Y | | _____ |
| X | | _____ |
| Date _____ | | |

| Revised date | Revised date | Revised date |
|-----------------|--------------|--------------|
| <u>11-25-91</u> | | |
| <u>7-31-96</u> | | |
| <u>9-30-97</u> | | |
| | | |
| | | |
| | | |



CONST. TIE
 T 32 R 23

61



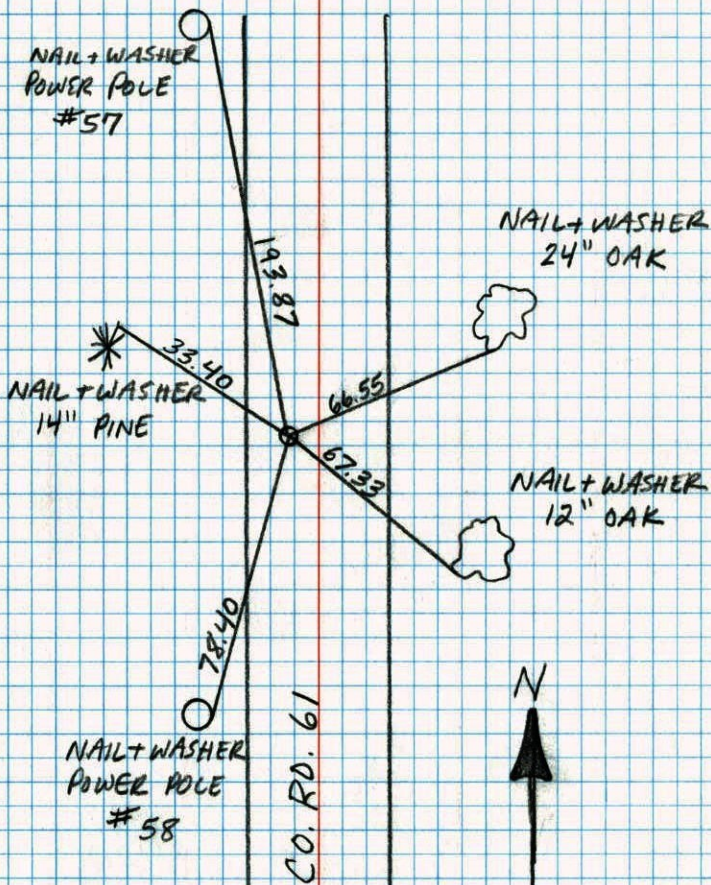
NO. 446

NATIONAL INSTRUMENT

page 61

EAST 1/4 SEC. 16 TW. 32 R. 23

CAST IRON MONUMENT
 AREA RESURVEY



NO. 446

NATIONAL INSTRUMENT

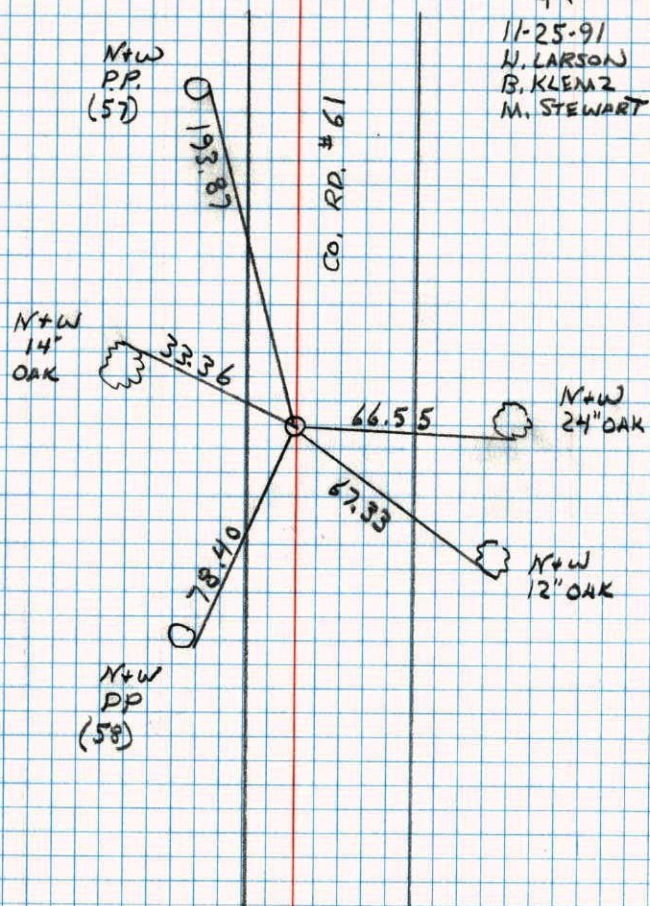
N

JASON ANDERSON
 JON DOLL
 7-31-96

EAST 1/4 CORNER SECTION 16 T32 R23

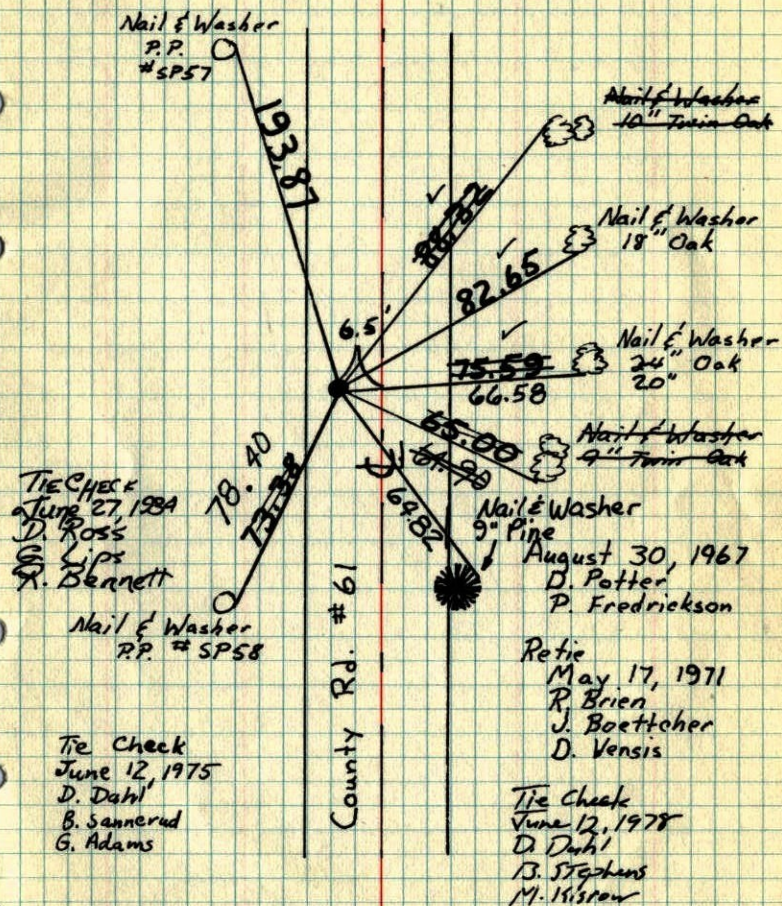
RETIED CAST IRON

C.I. 6'± W. of E



E 1/4 Cor. Sec. 16 - T32 - R23

Cast Iron Monument flush over
concrete Monument down 0.9'±
Set PK Spikes 2.00' North and East

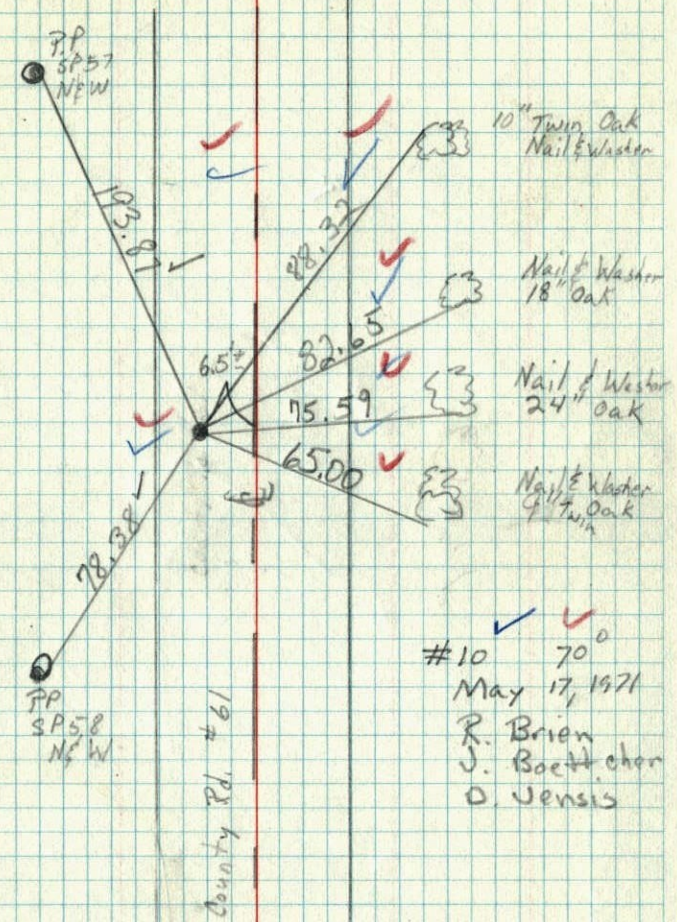


TEMPERATURE CORRECTED
AND HORIZONTALLY
TAPED MEASUREMENTS

ROLAND W. ANDERSON
COUNTY SURVEYOR
ANOKA COUNTY, MINNESOTA

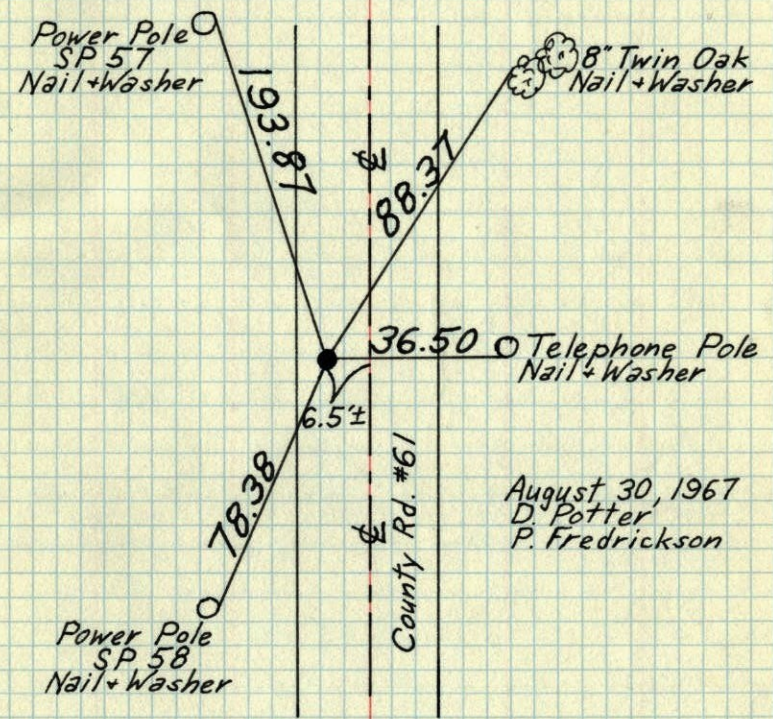
E 1/4 Cor. Sec 16 - T32 - R23

Cast Iron Monument flush
over concrete Monument down 0.9'±



E 1/4 Cor. Sec. 16 - T32 - R23

Cast Iron Monument flush over
Concrete Monument down 0.9'±

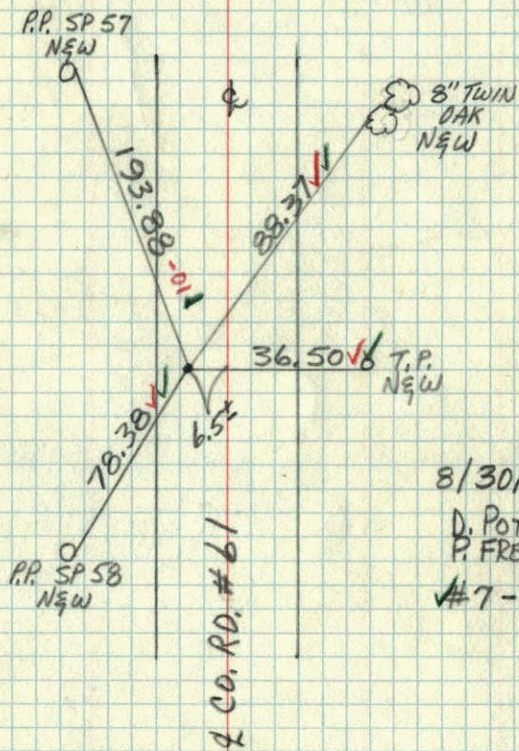


TEMPERATURE CORRECTED
AND HORIZONTALLY
TAPED MEASUREMENTS

ROLAND W. ANDERSON
COUNTY SURVEYOR
ANOKA COUNTY, MINNESOTA

E 1/4 Cor. Sec. 16, T32, R23

CAST IRON MON. FLUSH
OVER
CONC. MON. DOWN .9'±



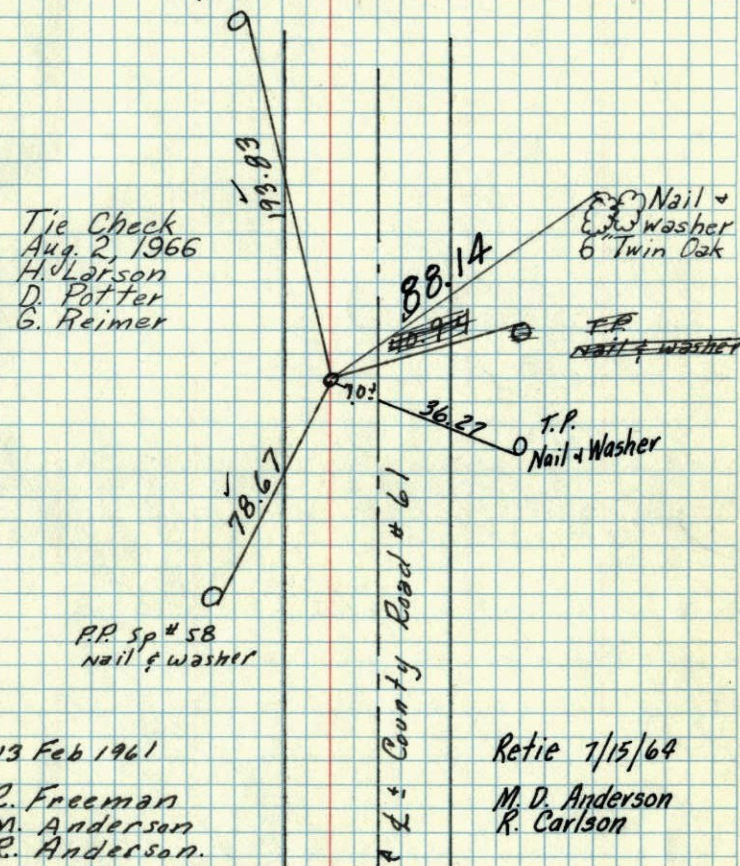
8/30/67

D. POTTER
P. FREDRICKSON
#7-63

E 1/4 Cor. Sec. 16-32-23 (Ham Lake)

Temp. Cor. Set P.K. Spike

Re-established Position from Cartwrights
P.P. Sp #57
Nail & washer



Tie Check
Aug. 2, 1966
H. Larson
D. Potter
G. Reimer

13 Feb 1961
R. Freeman
M. Anderson
R. Anderson.

Retie 7/15/64
M. D. Anderson
R. Carlson

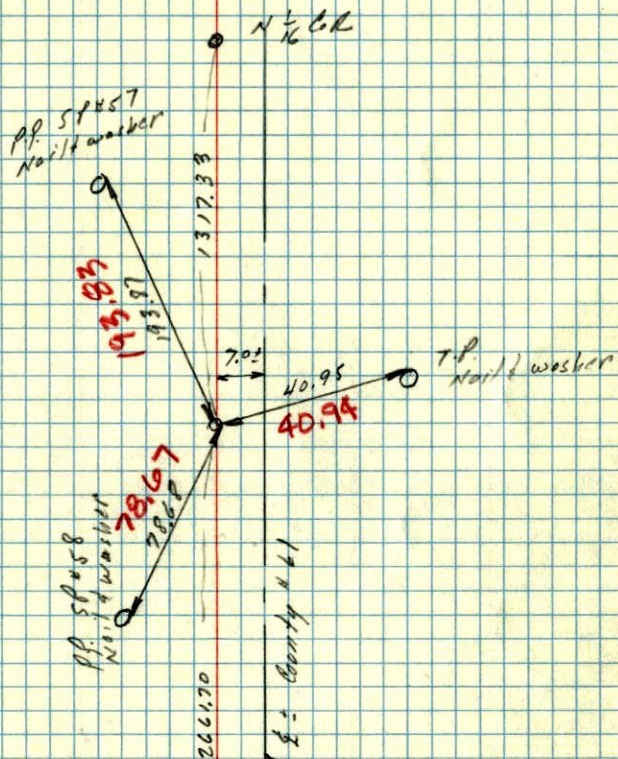
TEMPERATURE CORRECTED
AND HORIZONTALLY
TAPED MEASUREMENTS

ROLAND W. ANDERSON
COUNTY SURVEYOR
ANOKA COUNTY, MINNESOTA

13 Feb 1961
Freeman Anderson

+36°

E 1/4 Cor Sec 16-32-23 Ham Lake
Sol P.K. Spike temp. Cor.



TEMP. CORR. FOR
+36°

In Tie
Book

E 1/4 Sec. 16 T32 R 23 13

Conc. Mon.

Var. 8°30'

